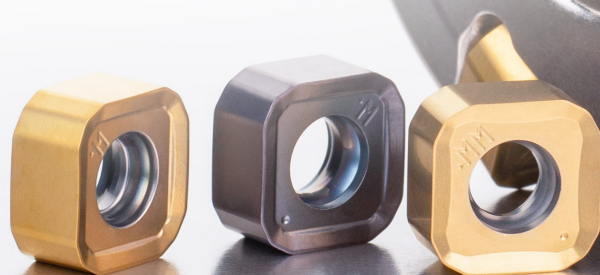
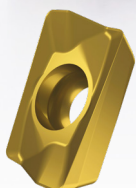


FANTASTIC OFFERS

On Our **Simply Reliable** Milling Best Sellers



ADMX

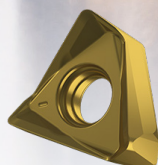


- **Shoulder milling**
- Valid for SAD 07, 11, 16
- Wide range of application
- High productivity



Get more information

TNGX

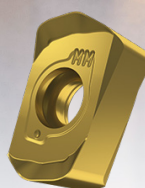


- **Shoulder milling**
- Valid for STN10 and STN16
- Doubled-sided robust insert
- Economical with 6 cutting edges



Get more information

BNGX

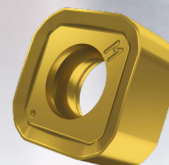


- **High feed milling**
- Economical with 4 cutting edges
- First choice for copy milling
- Valid for the SBN10



Get more information

SNGX



- **High feed milling**
- Economical with 8 cutting edges
- Axial depth of cut up to 1,7mm
- Valid for the SSN11

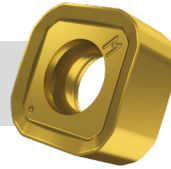


Get more information

Valid until 31.12.2023. Inserts purchased at standard prices. Promotional orders must be placed via email or phone. This offer can be withdrawn at any time and is at the discretion of Dormer Pramet. For more information, please contact your local salesman.

SSN11

High Feed Milling Cutter for **SNGX** inserts



BODY FOR
1€
WITH
10 INSERTS
PER POCKET

Economical high-feed milling solution dedicated for die and mold and general machining applications. A strong main cutting edge ensures high levels of durability and process security – especially when machining corners inside a pocket. Dedicated for die and mold production and suitable for most milling applications.



GET MORE
INFORMATION

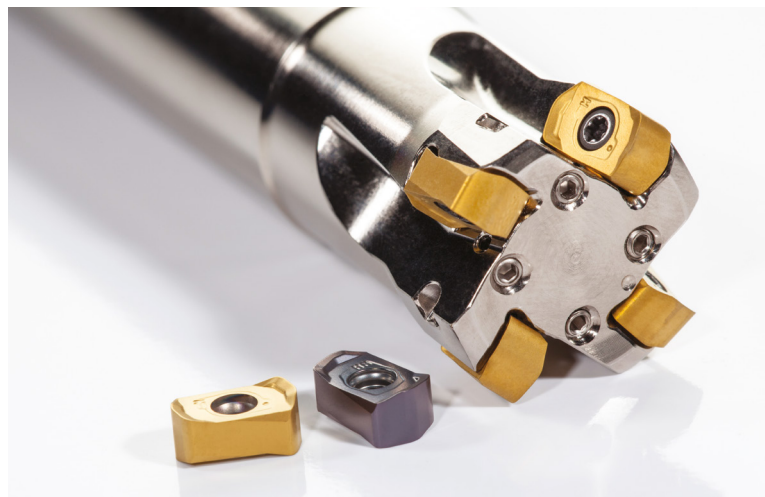
FEATURES AND BENEFITS **SSN11**

- ▶ 8 cutting edges for great price-per-edge efficiency in geometries M, MM and HM
- ▶ Increased productivity and higher metal removal rate, cutting depth up to 1,7 mm
- ▶ Reliable chip control improves process security inside pocket and around corners
- ▶ Reduced chatter improves long overhang capability up to $10 \times D$ reach



SBN10

High Feed Milling Cutter for **BNGX** inserts



Productive high-feed machining of a wide variety of materials. The progressive SBN10 cutters are suitable for most milling applications. Its unique pocket design can also carry precise ANHX inserts for finishing of wall and bottom offering a complete package for die and mold applications from fast roughing to finishing.



GET MORE
INFORMATION

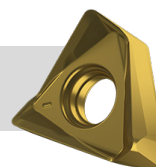
FEATURES AND BENEFITS **SBN10**

- ▶ Versatile usage from fast roughing to finishing
- ▶ Productive HFC milling with axial depth of cut up to 1mm
- ▶ Reliable chip control improves process security in excessive overhang
- ▶ 4 cutting edges on BNGX inserts in geometries M for steels, cast irons and MM for stainless steels, super alloys and HM specifically for hard steels and cast irons
- ▶ Finishing operations supported by 2-edged ANHX insert
- ▶ Competitive range from 16 up to 66 mm



STN 10/16

Shoulder milling cutters for **TNGX** inserts



BODY FOR
1€
WITH
10 INSERTS
PER POCKET



GET MORE
INFORMATION

Shoulder milling cutters with six-edged triangular negative TNGX inserts, which deliver excellent cost-effective precision. The range is suitable for steels, stainless steels, cast irons and non-ferrous metals, as well as most milling applications. Perfect chip evacuation improves surface quality of both wall and surface, while sharp-ground geometries reduce spindle load and ensure high precision in truly perpendicular corner.

FEATURES AND BENEFITS **STN10 / STN16**

- ▶ 6-edged, double-sided, triangular inserts in geometries M for steels, F for steels and stainless steels and even super alloys, FA for non-ferrous alloys
- ▶ Reduced cutting forces, leading to smooth and quiet machining for process security
- ▶ Precisely ground inserts improve the connection between passes for true 90° milling and produce an excellent surface quality

SAD 07/11/16

Universal shoulder milling cutters for **ADMX** inserts



Universal square shoulder milling cutters that work together with ADMX and ADEX inserts. Low cutting resistance helps in vibration sensitive applications, reduces spindle load and prevents work hardening. They are suitable for any milling application even HFC milling with specific ADEX inserts.

FEATURES AND BENEFITS **SAD07 / SAD11 / SAD16**

- ▶ Universal usage for various milling operations
- ▶ Wide application range supported by easy-to-choose geometries FA, F, FM, MM, MF, R, HF and HF2
- ▶ Complete assortment range starting from SAD07 with diameter 10 mm up to SAD16 with diameter 175 mm



GET MORE
INFORMATION

SAD07D



SAD11E



SAD16E



■ Primary use

▣ Possible use

SIMPLY RELIABLE

As a professional you can judge the quality of work by just looking at the chip. Our chip is a clean and uncomplicated shape that in itself tells a story. It is a clear and consistent signal and that's why we use it as a symbol for being **Simply Reliable**.

DORMER PRAMET

www.dormerpramet.com



**CONTACTS TO LOCAL
SALES SUPPORT
ALWAYS UP TO DATE!**



FOLLOW US...



ONLINE



SEGMENTS



LIBRARY APP



CALCULATOR APP

